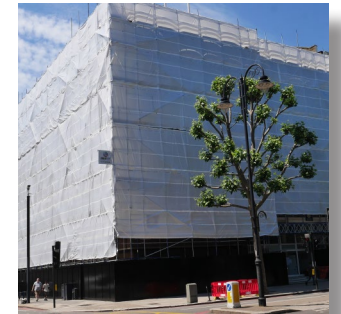


# Project Portfolio





## Introduction

Inner City Scaffolding provides innovative, bespoke scaffolding and access solutions with cost and safety as our priority.

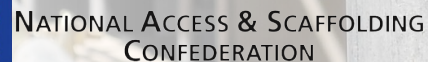
Incorporated in 2015, Inner City Scaffolding has a proven track record in exceeding our client's expectations in terms of design and delivery.

We continually evaluate our working practices and strive to be at the forefront of OH&S compliance, innovation and good practice.

Based in Dartford Inner City Scaffolding work for an extensive range of clients within the construction industry in London and the South East.

Inner City Scaffolding are an NASC audited full contracting member, holding many accreditations such as CHAS Advanced, Constructionline Gold, RISQS, Alcumus, Acclaim, SMAS, FORS Gold and Scaffolding Association giving our clients confidence when engaging with our business.

Inner City Scaffolding recognise that Health & Safety is a key deliverable on our projects, to re-enforce we hold British Safety Council membership, along with CIRAS membership to promote an unbiased, pro-active culture.



*Scaffolding and access solutions for the Construction Industry*



## Equality & Diversity

UK legislation sets minimum standards for companies to support successful workplace diversity and equality is covering age, disability, race, religion, gender and sexual orientation, among others.

Inner City Scaffolding firmly believes in this by giving value to all workers by benefiting and embracing their differences. We go beyond the government standards and aim higher when building a fully inclusive environment that contributes to our employee's well being and success. Inner City operates an Employee Assistance Programme (EAP), to ensure our employees have a wider range of support in every area.

## Environmental

As a company, we have recognised our responsibilities for environmental practices regarding our operations and the service offered to our clients.

The following are incorporated into our working procedures:

- Ensuring our customers and suppliers are working to their own environmental and legislative responsibilities
- Only using specific waste disposal facilities where control and environmental compliance is proven to be of the highest level.
- Investment in vehicles and equipment conforms to the latest environmental guidelines.
- Continual environmental training to all our workforce

**Copies of all our policies are available on request.**

## Supporting Charities

Inner City Scaffolding actively support local charities with donations and workday help placements in the south-east and London area.

## Sponsorship

Inner City Scaffolding is active in the sponsorship of sports at both the professional and grassroots levels. These include:

- Joint sponsorship of the 'The Surveyors Cup'. A five-a-side football event that brings together over 40 construction industry professionals, whilst raising money for sports-associated charities.
- Sponsorship of professional boxer Denzel (2 Sharp) Bentley. The fast-rising middleweight force Denzel Bentley is signed to famous boxing promoter Frank Warren. Denzel has his eyes on the prize and is looking to become British Middleweight Champion.
- Sponsorship of Football, marathon running and other charitable events.





## Skidders Hall, London

**Category: Historic**

**Scope of works:**

The Skidders Hall renovation is a multi-million-pound overhaul of this Grade I Listed building and Scheduled Ancient Monument protected by Historic England legislation. Inner City Scaffolding was awarded The City of London's Considerate Contractor Scheme (CCS) Scaffolding Gold Award 2023.

**Project Value:** £950,000

**Project Length:** 70 Weeks

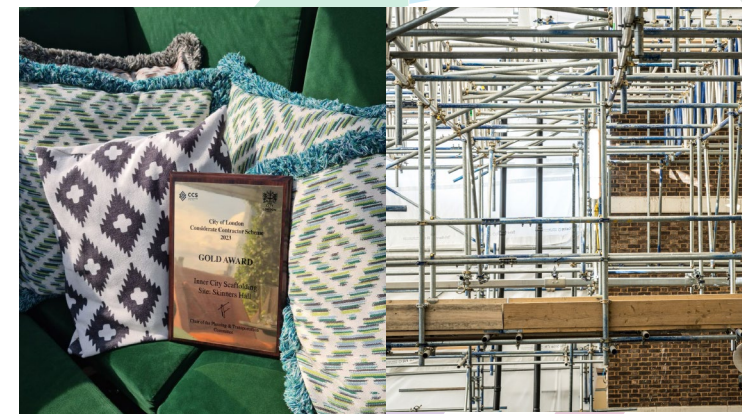
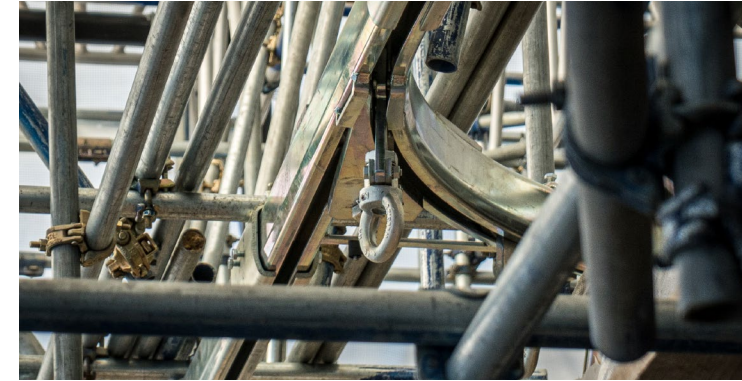
**Key Deliverables:**

1380m<sup>2</sup> Plan of HAKI System 750 AL Roofs

Foundation and support scaffolds below roofs covering 8500m<sup>3</sup>, weighing approximately 250 Tonnes

2000m<sup>2</sup> of timber decking, based on 3700m of scaffolding lifts

28,000m of scaffolding tubes



*Scaffolding and access solutions for the Construction Industry*

## Park Side Court (The Trojan)

**Category:** Cladding

### Scope of works:

Large scale complex engineered HAKI System scaffolding to the main building, based from ground level up to 40.00m roof level, with extensive triple bank 1300mm HD Spine Beams and steel shore integration, bridging podium areas. Logistics package consisting of HAKI site staircases and integrated goods hoists, with bespoke gated solution for the system scaffolding, along with material chutes for fabric removal. Lightning protection added to the scaffolding and hoist due to the buildings topographical location.

**Project Value:** £700,000

**Project Length:** 52 weeks

### Key Deliverables:

Approximately 4,000.00m<sup>2</sup> of FR Netted external facade scaffolding, erected from ground level and strategically placed load banks, consisting of 600.00 No. individual support legs, and 1,000.00 linear metres of HD Asterix Beams, X-Beams, and Ladder Beams.



*Scaffolding and access solutions for the Construction Industry*



## New Road Triangle

**Category: New Build**

### Scope of works:

The development consists of two residential buildings up to 14 storeys high, with 176 new homes.

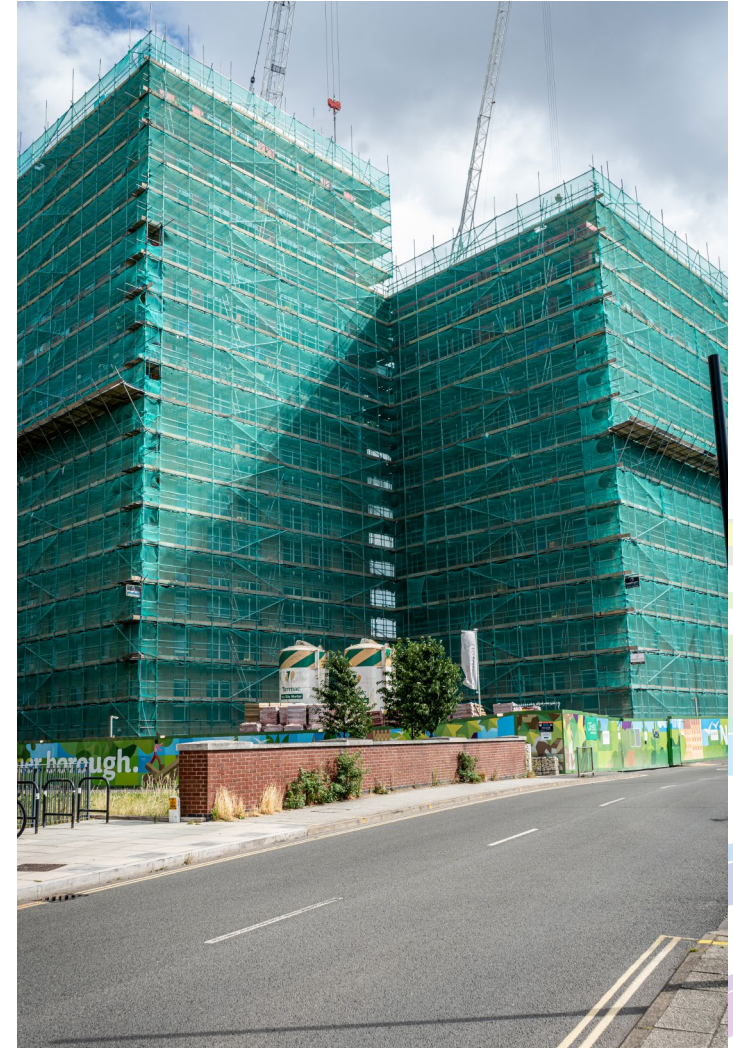
Inner City Scaffolding's works consist of Independent scaffolding to enable façade brick works, cladding and window installs, plus a special purpose hoist run offs along with an incorporated protection fans on the roadside.

**Project Value:** £550,000

**Project Length:** 40 weeks

### Key Deliverables:

9400m<sup>2</sup> of façade scaffolding  
2160m<sup>3</sup> of loading bays  
Flame retardant debris netting  
2nr hoist run off scaffolds  
Protection Fans.



*Scaffolding and access solutions for the Construction Industry*



## Roxwell Road

**Category: New Build**

**Scope of works:** External Façade & Brickwork scaffold

**Project Value:** £850,000

**Project Length:** 30 Weeks

### Key Deliverables:

The scaffolding package consists of 5nr blocks of floor level façade scaffolding multi-level brickwork adaptations, also required on this project were 3nr 2000kg passenger and good hoist run offs. We supplied 2nr progressive erect Loading bays to each block for brickwork along with HAKI Staircase for access. To all road and park elevations, a number of boarded protection fans were erected. Scaffolding is also clad in part monoflex and debris netting.



*Scaffolding and access solutions for the Construction Industry*

## Mar House

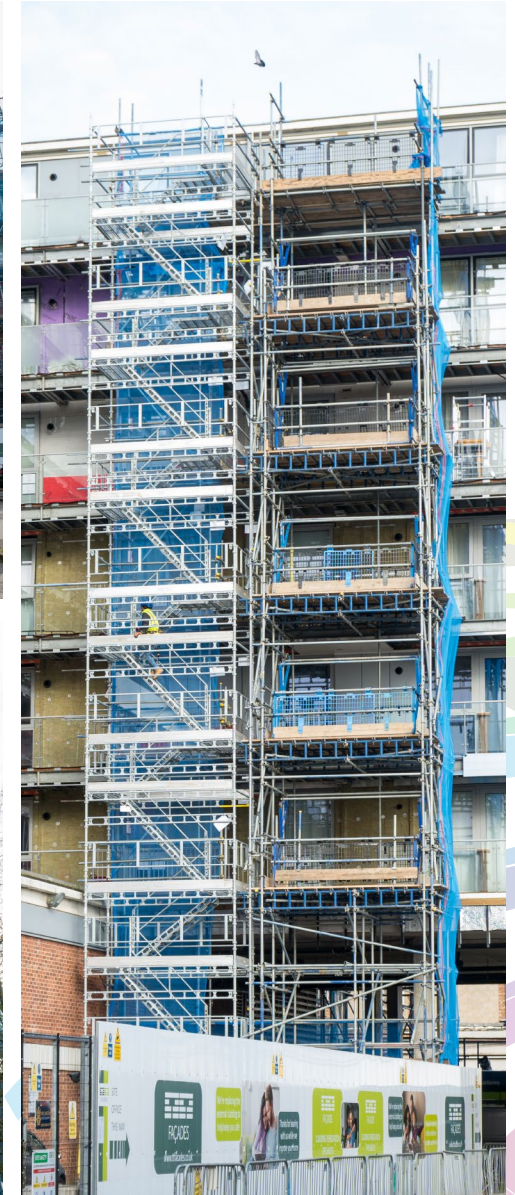
**Category:** Cladding

**Project Value:** £200,000

**Project Length:** 20 Weeks

### Key Deliverables:

3 different phases of scaffold to enable different stages of cladding repairs, erected in floor level lifts (3m) and bridged over the main entrance, Stacked loading bays for easy loading by a telehandler. HAKI Staircases also erected and 1nr of the HAKI Staircases to be compact HAKI due to the tight access along one elevation Finally the scaffold was clad in certified flame-retardant Debris netting.







## Harbour Exchange, London

**Category: Commercial**

### Scope of works:

Inner City Scaffolding recently completed the erection of a 36m high access scaffolding, heavy-duty loading gantry and 300kg lifting frame. ICS was tasked with the initial design, a scope to provide safe working access to the external façade while maintaining a gap between the scaffold and the building, facilitating the flue extension to the full height of the building.

**Project Value:** £100,000

**Project Length:** 20 weeks

At present, the Scaffold is fully installed and in service, with adaptations for all supporting steelworks prior to the flue extension ready to be undertaken.



*Scaffolding and access solutions for the Construction Industry*



## St Bartholemew's Hospital Rochester, Kent

Category: Refurbishment

### Scope of works:

- Full design
- Temporary roof - 3,000 sqm
- 10,000sqm of scaffolding works providing access externally and internally to the main and surrounding buildings.
- Demolition scaffolding with hoists.
- Birdcages to allow access platforms for roof works.
- Crash decks for demolition.

**Project Value:** £400,000

**Project Length:** 60 weeks

St Bartholemew's Hospital was closed in 2016 and was the oldest hospital in England. The building is being redeveloped to create 155 homes.

With the age of the building, we faced some challenges, which included weak floors and unstable ground. We overcame this with back propping and beam to ease loading on specific areas.

Additionally, because the roof works were at different heights, we ensured all areas were watertight using a specialist roof flashing system.



*Scaffolding and access solutions for the Construction Industry*



## Baden Powell House

**Category: Refurbishment**

### Scope of works:

- Full design.
- 2nr Hoists supplied
- Protection Deck
- Pavement License
- Lifting frame

**Project Value: £250,000**

**Project Length: 20 weeks**

Baden Powell House is our first project for this new client. Our task at the rear of the building was to design a scaffold that could be founded from load bearing steel columns every 3m to 4m apart. To do this we used dolly towers connected with X Beams across the whole of the rear elevation, then punching up supplying lifts to each floor level for a full refurbishment also at the rear we erected a protection deck over lightwells. The front elevation also had its challenges with the task of keeping the front of the building live while the refurbishment went ahead, we have also had to work around the building stepping out at first floor level with the introduction of a 3rd standard to maintain a working platform at low level. Inner City has also supplied two 1500kg goods only hoist to the rear elevation to allow deliveries to each floor. We also took on the pavement license for the client



*Scaffolding and access solutions for the Construction Industry*

## RNLI Tower Pier Lifeboat Station

**Category:** Commercial

**Scope of works:**

Lifting, Support & Access  
Scaffolding for Brow Removals  
and Emergency Rescue from The  
Thames

**Project Value:** £30,000

**Project Length:** 26 Weeks

3 Phased scaffolding package consisting of 1.00 Tonne SWL Lifting Rig, built to raise the existing brow structure, under which a bridged HAKI system support scaffold was built from granite caps at low tide to hold the brow and provide safe topside access during dismantlement. Following dismantle of the brow, the existing system scaffolding was modified into a full HAKI access and staircase scaffold, with adjoining traditional tube and fitting anti-slip ramp access built off the pontoon, to ensure access can be obtained during tidal flows and ebbs.



## Bow Exchange

**Category: New Build**

### Scope of works:

- Full design.
- Independent scaffolding to the entire 11 storey building.
- Loading gantry.
- Staggered loading bays on each floor.
- Bridge beams over party walls.

**Project Value:** £400,000

**Project Length:** 50 weeks

Bow Exchange is a new build complex consisting of apartments and social housing for a long-standing client. Our works on this project consisted of a large loading gantry next to the pit lane and floor level lift independent scaffolding to the entire building 11 stories high. The main independent was clad in green debris netting to match the main contractor's company colours. One of the elevations required us to design the scaffolding to bridge beam over party walls. We also erected a number of staggered loading bays at each floor level to be loaded by the crane on site



*Scaffolding and access solutions for the Construction Industry*

## 68 King William Street

**Category:** Refurbishment

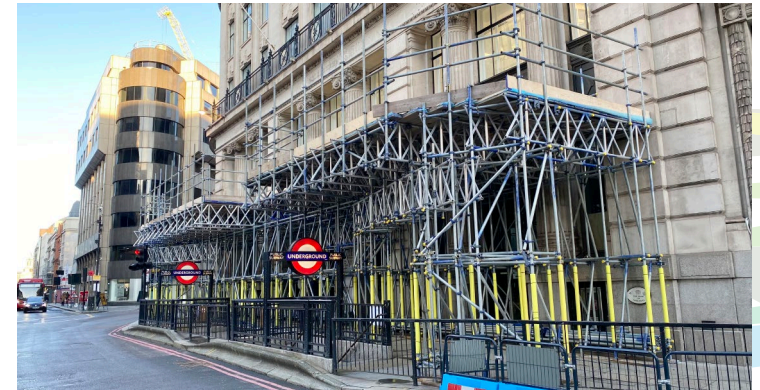
### Scope of works:

- Three truss out scaffolds from the front, East and West balconies with huge hangers spanning front to back.
- Two temporary roofs spanning front to back.
- Beamed cantilevered independent to the cupola.
- Low level 30m cantilever loading gantry over the underground entrances and exit.

**Project Value:** £175,000

**Project Length:** 50 weeks

A highly complex scaffolding solution erected from the existing roof of the building to facilitate every requirement during the construction phase.



*Scaffolding and access solutions for the Construction Industry*

## Lion Green Road

**Category: New Build**

### Scope of works:

- Full design.
- Erection of floor level lifts with staggered and cantilevered loading bays.
- Adaptation of all elevations for progressive brickwork.

**Project Value:** £450,000

**Project Length:** 60 weeks

Lion Green Road is for long-standing client and consists of the construction of five new build blocks of apartments.

Our task was to erect floor level lifts with a mix of staggered and cantilevered loading bays for crane loading. The next stage of the scheme was to adapt all elevations for progressive brickwork then to reinstate the scaffolding back to floor-level lifts.

The scaffolding was also fully clad in fire-retardant green debris netting to match the client's colours.



## Ladderswood Estate

**Category: New Build**

### Scope of works:

- Full design.
- Scaffolding to all elevations
- Loading bays

**Project Value:** £600,000

**Project Length:** 60 weeks

Ladderswood Estate consists of 4nr blocks of flats again for a long-standing client.

We are erecting scaffolding to all elevations of each block at floor levels with a mixture of staggered loading bays for crane loading and progressive erect loading bays for bricklayers.

We also have internal block work scaffolding on ground floor areas and one part of an elevation that adjoins to an existing building.

At high level we have a number of large spans to bridge beam to allow water proofing works to progress.





## Ilford Station - Phase 1

Category: Demolition - Rail

### Scope of works:

- Full design
- Erection of independent scaffolding from internal bridge beams.

**Project Value:** £200,000

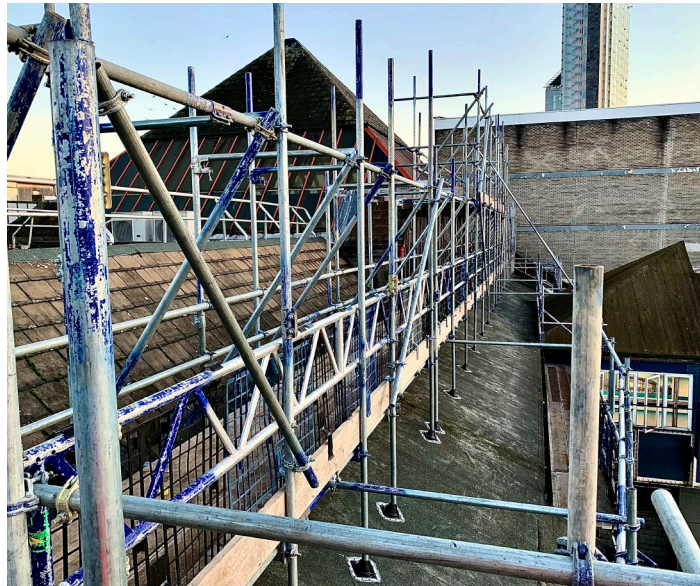
**Project Length:** 40 weeks

As with all rail projects the design and planning process is critical with any work being undertaken over a short possession

These works were carried out over the Christmas and New Year period. We erected an independent scaffolding walkway that was erected off beams that in turn sat on tubes that were clamped to the wall.

Inner City also supplied an independent scaffold for the side entrance to allow a new station entrance steel tower and power supplies to be installed.

Our works continued at Ilford Station throughout the year to enable the client to continue with the completion of a new station hall and entrance.



*Scaffolding and access solutions for the Construction Industry*

## Iford Station - Phase 2

**Category:** Rail

**Scope of works:**

- Full design
- Independent scaffolding

**Project Value:** £150,000

**Project Length:** 30 weeks

As with all rail projects, the design and planning process is critical for any work programmed over a short period.

These works were carried out over a 48-hour possession, with 12 hour back to back shifts to meet a tight deadline.

Our experience allowed the client to request a design change four hours ahead of schedule and still keep to the programme.

Inner City made the beam sections before commencing the works, and each section lifted in by crane to support towers founded within the footbridge.





## Studios Work

**Category: Infrastructure**

### Scope of works:

Inner City Scaffolding completed the design and build of a HAKI system scaffold suspended from the roof steels in a large indoor facility. This is suspected to be the UK's current largest suspended scaffolding from a roof structure. The key challenges for this project were the loadings the steels could take, due to this traditional tube and fitting scaffold could not be used.

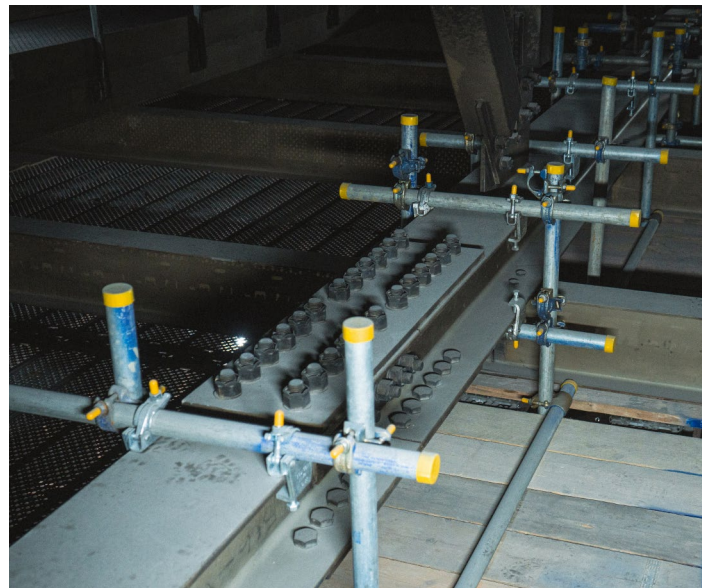
**Project Value:** £1,500,000

**Project Length:** 40 weeks

### Key Deliverables

Nearly 3,000m<sup>2</sup> of fully suspended/self-cantilevered HAKI system scaffolding

220 Suspension points holding approx. 100,000.00 KG of suspended access



*Scaffolding and access solutions for the Construction Industry*

## Bracknell Storage

Category: Refurbishment

### Scope of works:

- Full design
- Independent scaffolding
- Truss out

**Project Value:** £400,000

**Project Length:** 40 weeks

Inner City designed and erected an independent scaffold spanning 235 meters around the building and 18 meters high.

The addition of three rubbish chutes at different levels allowed waste materials from an internal strip out.

To complete the works we installed a small temporary roof to provide weather protection to the generator room to complete our works.



## Bentley House

**Category: Refurbishment**

### Scope of works:

- Full design
- Full encapsulation
- Loading gantry
- Temporary roof cover

**Project Value: £225,000**

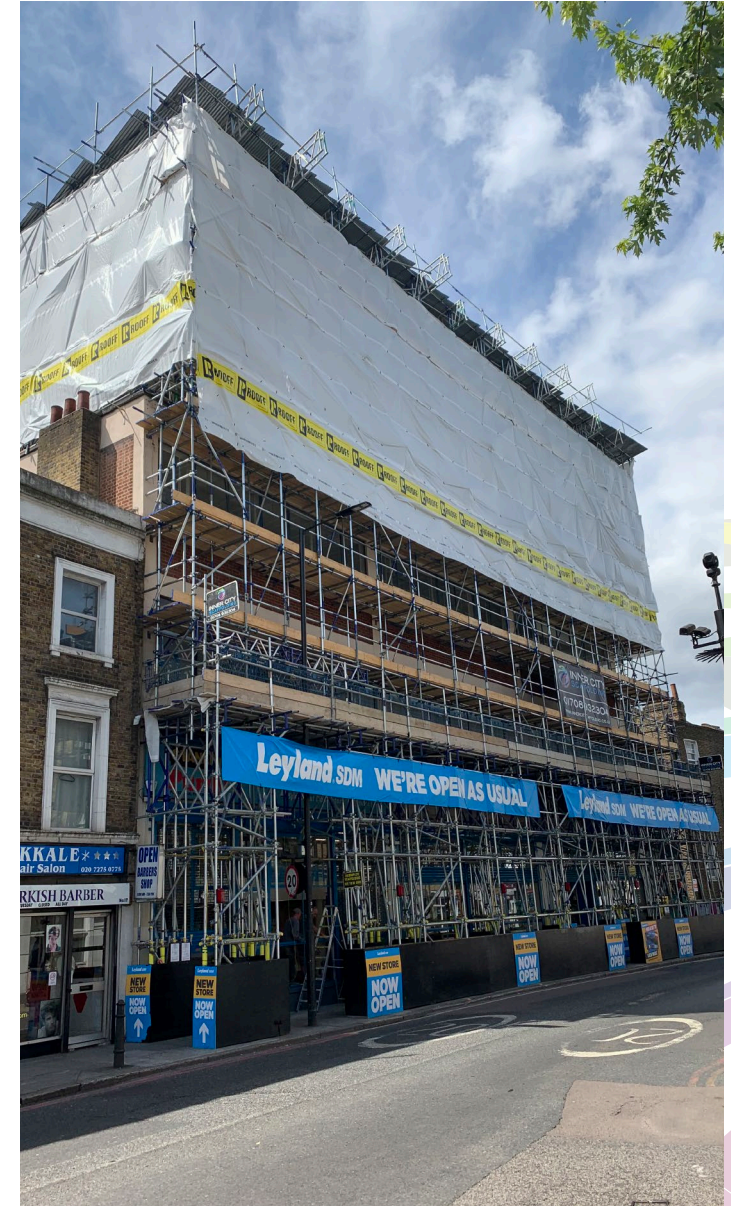
**Project Length: 40 weeks**

The works were for a refurbishment project for an existing client. It required both internal and external scaffolding.

Commencing with a full building monoflex wrap which allowed access for window and facade works combined with the construction of an additional floor.

Additionally, we erected a loading gantry with a pedestrian walkway underneath which was double boarded and wrapped in monoflex for maximum protection.

Internally Inner City provided edge protection for stairwells and birdcages for the ground floor refurbishment.



## Cross Lane

**Category: New Build**

### Scope of works:

- Full design
- Cantilever scaffolding
- Hoist tower

**Project Value:** £300,000

**Project Length:** 50 weeks

A construction project to build two thirty-five apartment blocks.

Block A was under a meter away from a neighbouring building which meant that Inner City was required to build a beamed horse scaffold.

The scaffolding came out of the building to support a cantilever scaffold. It measured 20 meters in length, taking up an additional 6 meters for external brickwork.

Both blocks required staggered level heavy duty beamed loading bays to allow crane loading to every level.

Additionally, to this, we were required to adapt both scaffolds to incorporate intermediate rope uplifts for the bricklayers.

A hoist tower runoff on block A to provide loading for the goods hoist erected.



*Scaffolding and access solutions for the Construction Industry*

## Wapping Chimney

**Category: Demolition**

**Scope of works:**

- Full design
- Full Monoflex encapsulation

**Project Value:** £100,000

**Project Length:** 30 weeks

Erection of independent scaffolding to protect a Grade II listed building to the rear of 50m high chimney.

This work was for one of our long-standing demolition clients. The chimney had to be hand demolished because of the building behind being in such close proximity.

The scaffolding bridged over the building from the rear and the chimney scaffolding erected from there.

Fire retardant monoflex to full height encapsulated the scaffolding with additional protection netted fan covering the building.

The hand demolition work progress resulted in Inner City striking a ring every other day.



*Scaffolding and access solutions for the Construction Industry*

## Carlton House

**Category: Demolition**

**Scope of works:**

- Full design
- Full protection scaffolding

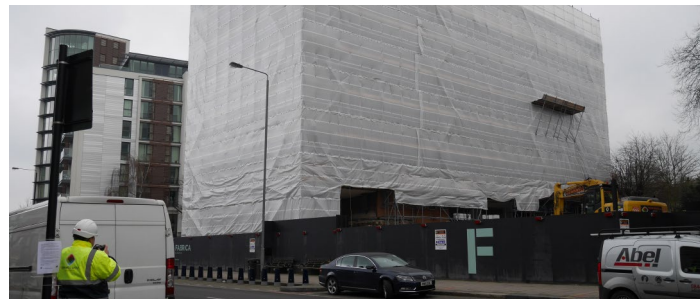
**Project Value:** £150,000

**Project Length:** 20 weeks

Carlton House was a six-storey office block in Putney located in a busy high street location.

Scaffolding was erected on all sides of the building and covered in fire retardant monoflex.

Scaffold fans were incorporated to reduce the likelihood of falling debris.





## Harrow Road

**Category: New Build**

### Scope of works:

- Full design
- A free-standing heavy-duty gantry 10kn
- Independent scaffolding

**Project Value:** £220,000

**Project Length:** 40 weeks

The independent scaffolding enabled the brickwork contractors to build up walls to the concrete frame. A beamed section was used on the other side spanning the party wall to allow the supply of materials to the bricklayers.



*Scaffolding and access solutions for the Construction Industry*



## Contact

For more information on our services:

T: 01708 932 304

e: [info@innercityscaffolding.co.uk](mailto:info@innercityscaffolding.co.uk)

w: [www.innercityscaffolding.co.uk](http://www.innercityscaffolding.co.uk)

 Inner City Scaffolding

 @innercityscaffolding

 Inner City Scaffolding



*Scaffolding and access solutions for the Construction Industry*



**Inner City Scaffolding Limited,**  
1 Waterside Court,  
Galleon Boulevard  
Crossways Business Park  
Dartford, DA2 6NX

**T: 01708 932 304**

**E: [info@innercityscaffolding.co.uk](mailto:info@innercityscaffolding.co.uk)**

**W: [www.innercityscaffolding.co.uk](http://www.innercityscaffolding.co.uk)**